

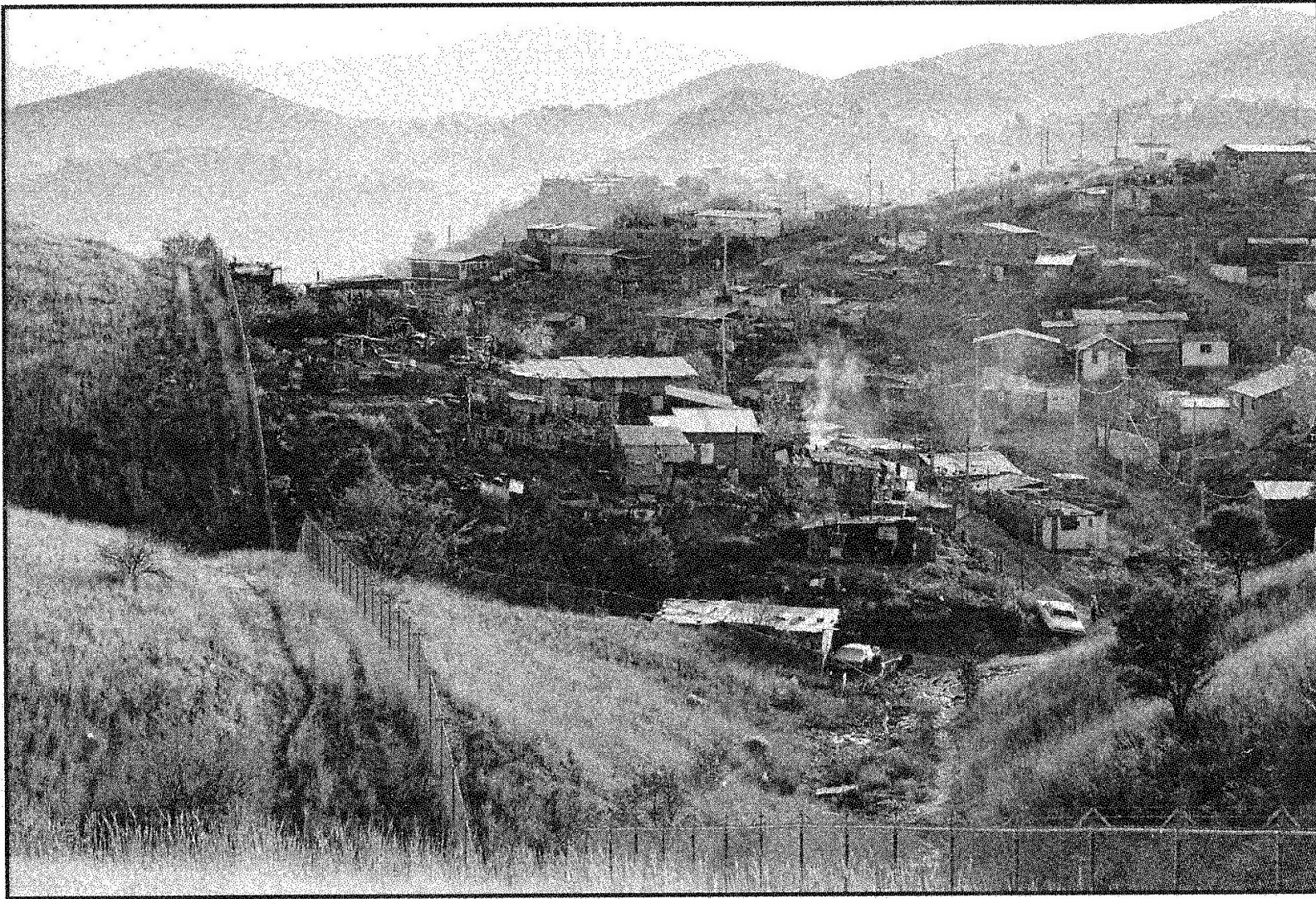


**Falmouth Reads
Together
Presentation:**

**What's Next for
the Border?**

“A true border, a true place of encounter, is by nature permeable. It is not like medieval armor, but rather like skin. Our skin does set a limit to where our body begins and where it ends. But if we ever close up our skin, we die.”

--Cuban-American theologian Justo González



View
overlooking
Nogales,
Sonora,
Mexico, from
western edge
of Nogales,
Arizona, circa
1993



Nogales wall
and
surveillance
tower



Border wall in
Arizona around
the time Trump
was elected on a
promise to
“build the wall”



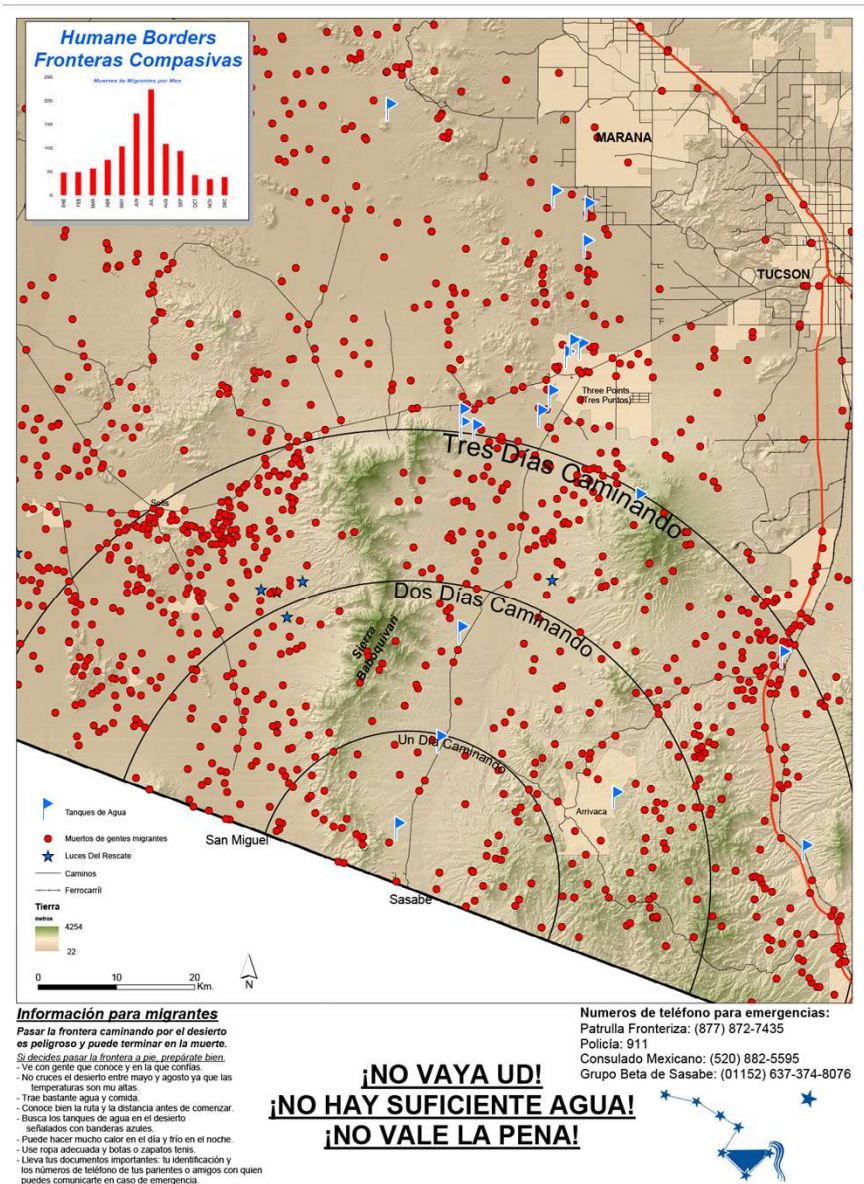
Migrants being
arrested in the
Rio Grande
Valley



Central American migrants waiting to apply for asylum at the Nogales port of entry in the spring of 2018



Migrants gather
outside the Kino
Border Initiative
comedor in
Nogales, Sonora



Humane Borders poster
warning migrants about
crossing the Southern Arizona
desert

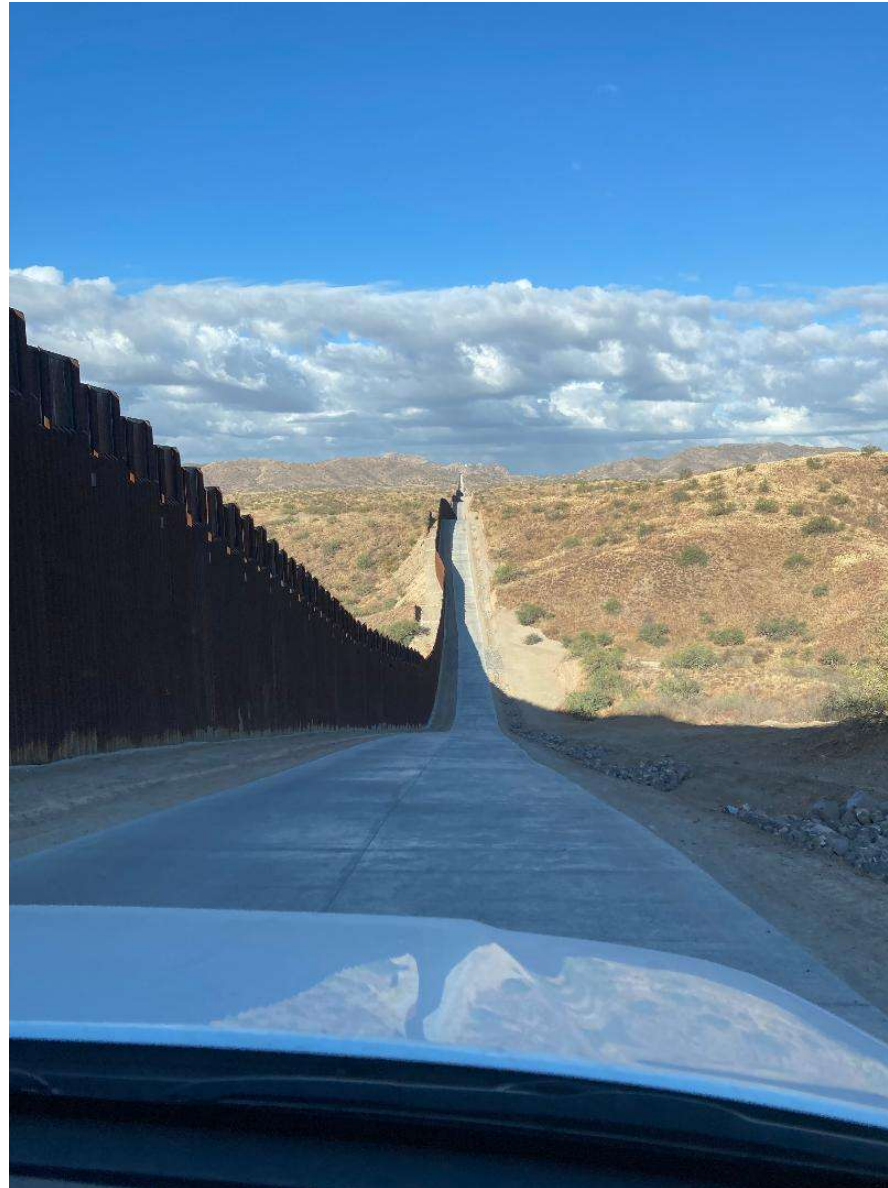
The words at the bottom say:

“Don’t go!
There’s not enough water!
It’s not worth it!”



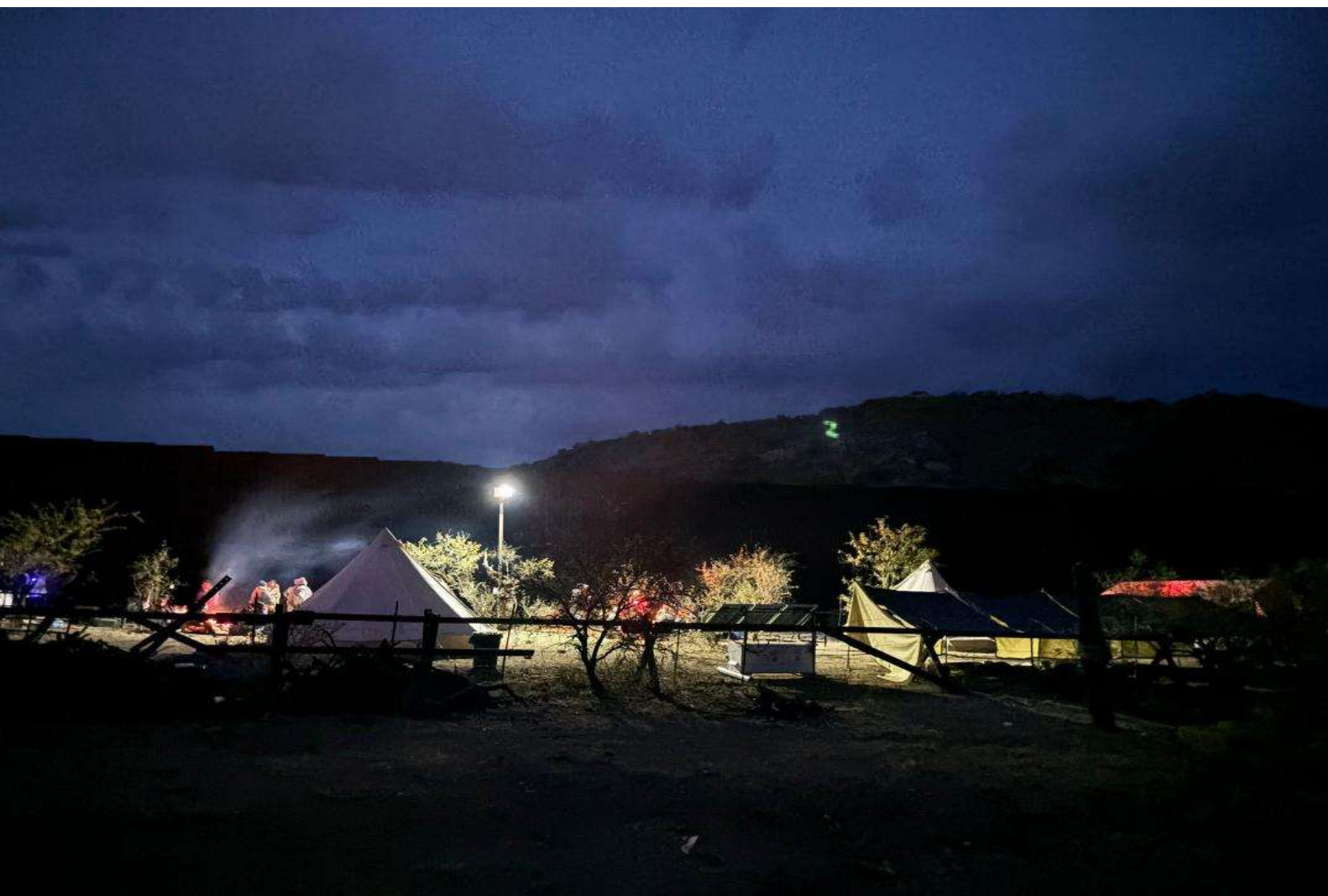
Hidden camera
video of Border
Patrol agents
kicking over
water left for
migrants in the
desert

Paved road
running along
border wall
outside Sasabe,
Arizona,
December, 2024





Migrants walk
around end of
border wall
outside Sasabe,
Arizona,
December, 2024



Tucson
Samaritans
camp at
border wall
near Sasabe,
Arizona,
December,
2024



Migrants wait at dawn at Samaritans camp near Sasabe, Arizona, December, 2024







Border Patrol
truck arrives to
pick up migrants



Migrants line up
to await
transportation by
Border Patrol to
station in Sasabe

Migrants
seeking
asylum walk
along border
wall toward
Sasabe,
Arizona





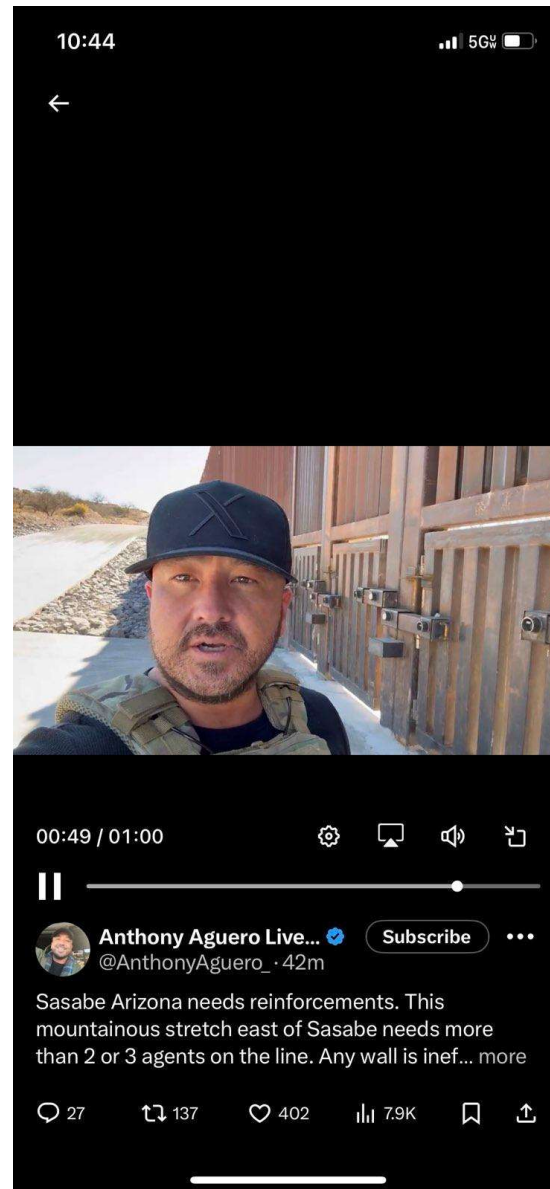




Mexican
military on
other side of
border fence
outside Sasabe
in February,
2025



Screen shot of
post by anti-
immigrant
vigilante
Anthony Aguero,
February, 2025





Screen shot
of post by
anti-
immigrant
vigilante
April Sparks,
February,
2025



“

The USDA Forest Service has taken no action related to humanitarian organizations along the border wall east of Sasabe, Arizona. For questions related to border enforcement, we recommend contacting U.S. Customs and Border Patrol for more information.

”



El Jefe, captured
by wildlife
camera in
Southern
Arizona
mountains



Artwork of
giant baby
looking over
the border
wall by JR,
Tecate,
California,
2017



Border
Patrol SUV
and
Southern
Arizona
mountains



The Beloved Border

Humanity and
Hope in a
Contested Land

By Miriam Davidson